


**CERTIFICATE OF ANALYSIS**

Date issued: 2025/10/14

CLIENT INFORMATION	SERVICE INFORMATION
Contact person:	Date received: 2025/10/08
Contact details:	Request date: 2025/10/04
Tested for:	Packaging description:
Address:	Plastic bag
	Test requests/comments:
	Cannabinoids, micro, EU pesticides, Heavy metals, total ash, moisture content

SAMPLE APPEARANCE	SAMPLE INFORMATION
	Sample type: Concentrate
Sample integrity: Good	Mass received, incl. prim. packaging (g): 110
	Batch #: Not specified

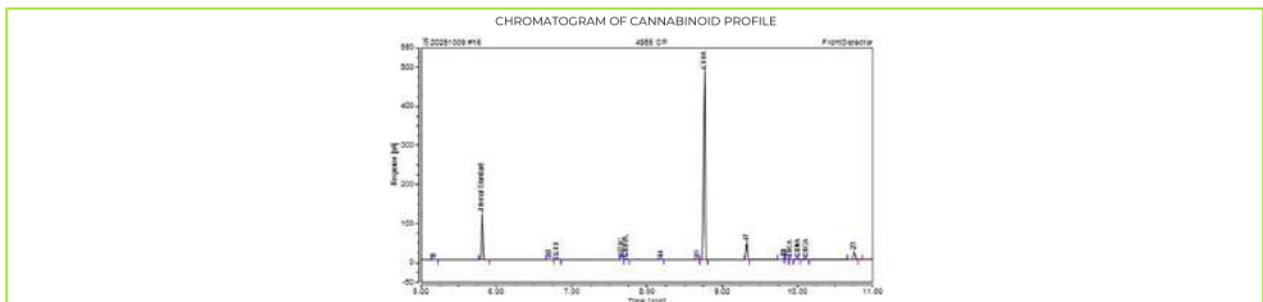
**CANNABINOID PROFILE**

CANNABINOID	RESULT (mg/g)	RESULT (%)
CBCA	Below QL (<1.76 mg/g)	Below QL
CBC	Below QL (<1.76 mg/g)	Below QL
Total CBC*	n.a.	n.a.
CBDA	898.574	89.857
CBD	12.241	1.224
Total CBD*	800.290	80.029
CBDVA	4.861	0.486
CBDV	Below QL (<1.76 mg/g)	Below QL
Total CBDV*	4.263	0.426
CBGA	4.232	0.423
CBG	Below QL (<1.76 mg/g)	Below QL
Total CBG*	3.715	0.372
CBL	Below QL (<1.76 mg/g)	Below QL
CBNA	4.605	0.461
CBN	Below QL (<1.76 mg/g)	Below QL
Total CBN*	4.034	0.403
$\Delta^8$ -THC	Below QL (<1.76 mg/g)	Below QL
THCA	2.731	0.273
$\Delta^9$ -THC	Below QL (<1.76 mg/g)	Below QL
Total $\Delta^9$ -THC*	2.395	0.240
THCVA	Below QL (<1.76 mg/g)	Below QL
THCV	Below QL (<1.76 mg/g)	Below QL
Total THCV*	n.a.	n.a.
<b>Total Cannabinoids</b>	<b>927.244</b>	<b>92.724</b>

Method reference: QP 7.2.1

QL= Quantification limit

Analysis date: 2025/10/10



\*Totals are calculated as per after decarboxylation

## CERTIFICATE OF ANALYSIS

CoA I.D. \_\_\_\_\_ Date issued 2025/10/14

### MICROBIOLOGICAL CONTAMINANTS

TEST	cfu/g	Method	COMMENT	ANALYSIS DATE
Total aerobic count	To follow	Ph. Eur*		
Yeast and Mould	To follow	Ph. Eur*		
Escherichia coli	To follow	Ph. Eur*		
Salmonella	To follow	Ph. Eur*		
Staphylococcus aureus	To follow	Ph. Eur*		
Bile tolerant Gram-negative bacteria	To follow	Ph. Eur		
Enterobacteriaceae	To follow	Ph. Eur*		
Pseudomonas aeruginosa	To follow	Ph. Eur*		

\*Outsourced ND = Not detected (<10 cfu/g)

### LOSS ON DRYING

#### RESULT

% Moisture LOD 2.6 %  
Method reference: QP 7.2.6 Analysis date: 2025/10/09

### TOTAL ASH

#### RESULT

% Total Ash 6.4 %  
Method reference: QP 7.2.19 Analysis date: 2025/10/13

### HEAVY METALS

METAL	µg/g (ppm)	QL (mg/kg)	
Chromium (Cr)	To follow	0.01	
Copper (Cu)	To follow	0.04	
Arsenic (As)	To follow	0.01	
Cadmium (Cd)	To follow	0.01	
Lead (Pb)	To follow	0.01	
Mercury (Hg)	To follow	0.01	

Method reference: Outsourced (ICP) ND = none detected QL = Quantification limit Results received:

### PESTICIDES DETECTED

PESTICIDE	RESULT (mg/kg)	QL (mg/kg)	COMMENT
	To follow		

Method reference: Outsourced (LCMS & GCMS) QL = Quantification limit Results received:  
Full list of pesticides covered on next page.

#### Technical Signatory

*These results relate only to the sample indicated above and tested by Qure.  
This report shall not be reproduced, except in full, without the approval of Qure.  
Results apply to the sample as received by Qure.  
All tests performed in-house are done at 98 Bath Street.*

- End of results -

